

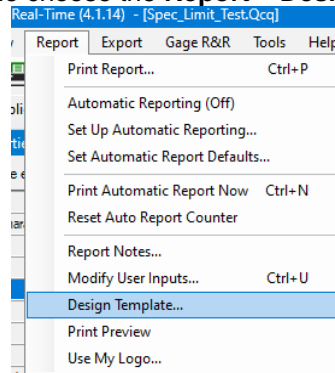
Reporting – Adding a Trace Field to Raw Data Header

The default Raw Data reports that come with QC-CALC do not show any trace field values in the heading area of the report. The reason for this is because the trace field values should, in theory, be different for each row of the table making it difficult to show any single value in the header. This White Paper will give step by step instructions for designing your own custom template and adding the Text Trace field 1 value from the first record displayed to the header area of one of the standard Raw Data templates.

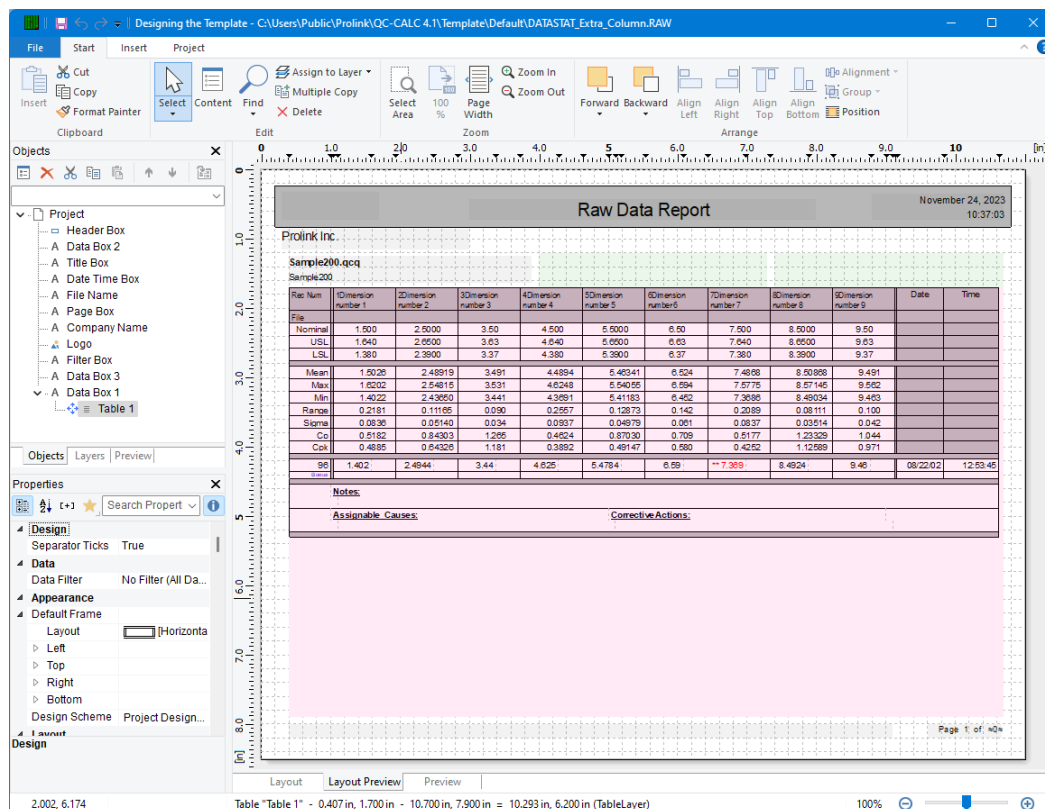
The Report Designer

The directions shown here will add Text Trace field 1 (the value assigned to the first record in the table) to the header area of the report. This is a lengthy process, but relatively simple to accomplish.


1. From QC-CALC Real-Time choose the **Report – Design Template** menu.

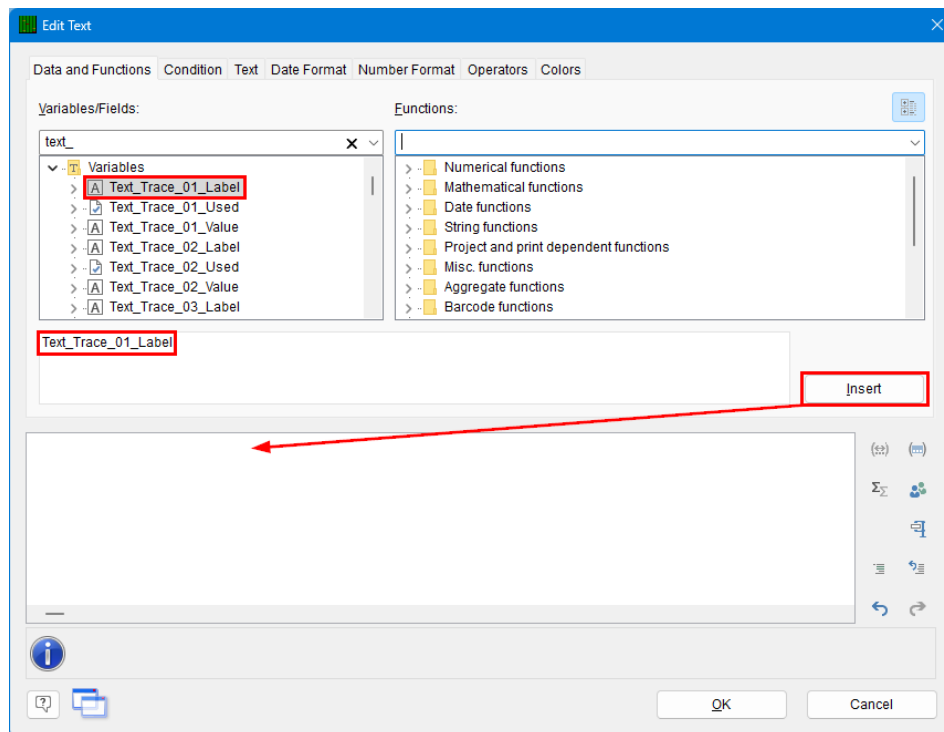
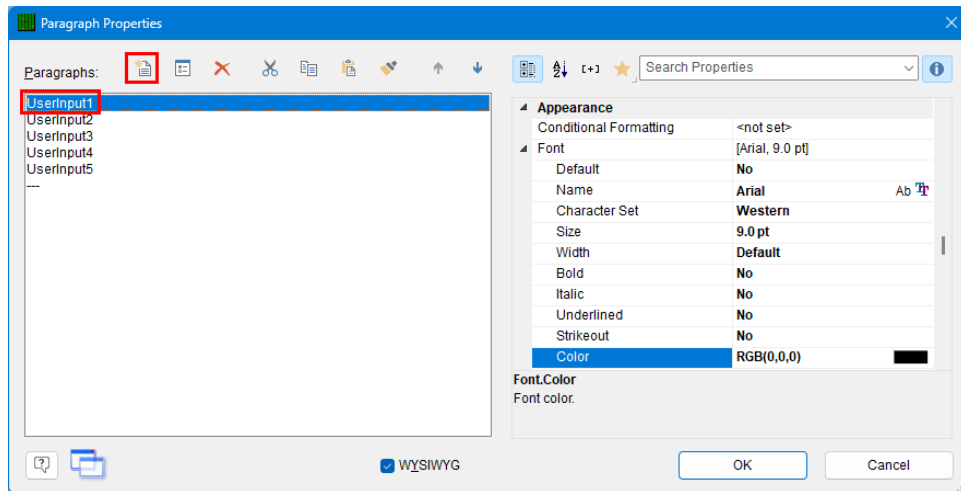
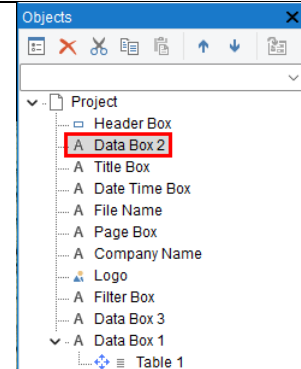


2. Choose the DataStat.raw template from the list of files that appears and click **Open**.
3. The Report Designer now appears on the screen.



Reporting – Adding a Trace Field to Raw Data Header

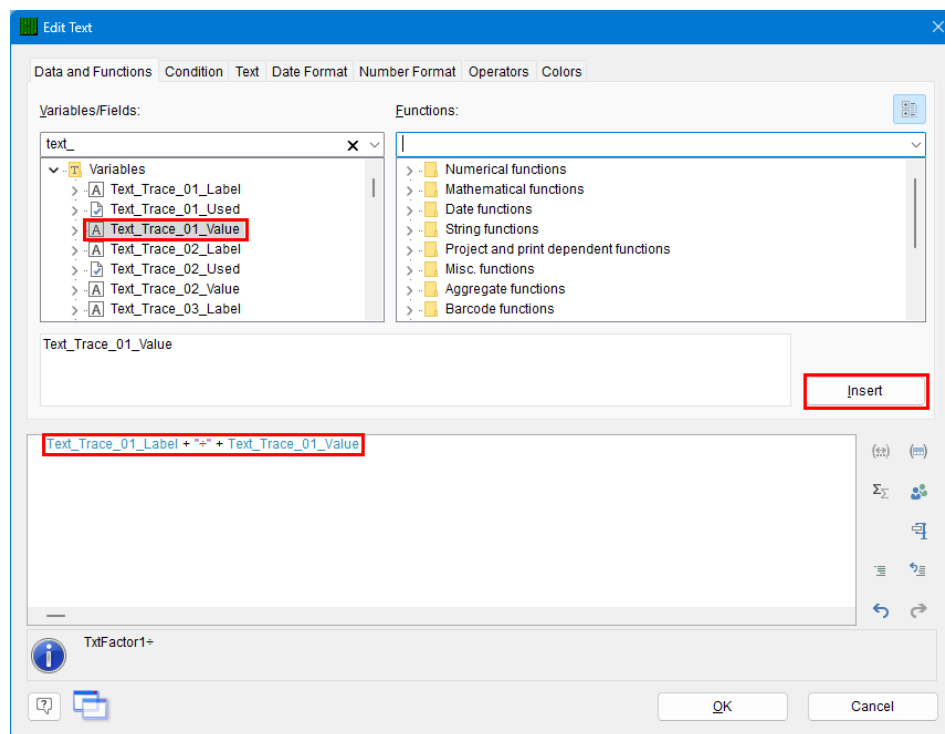
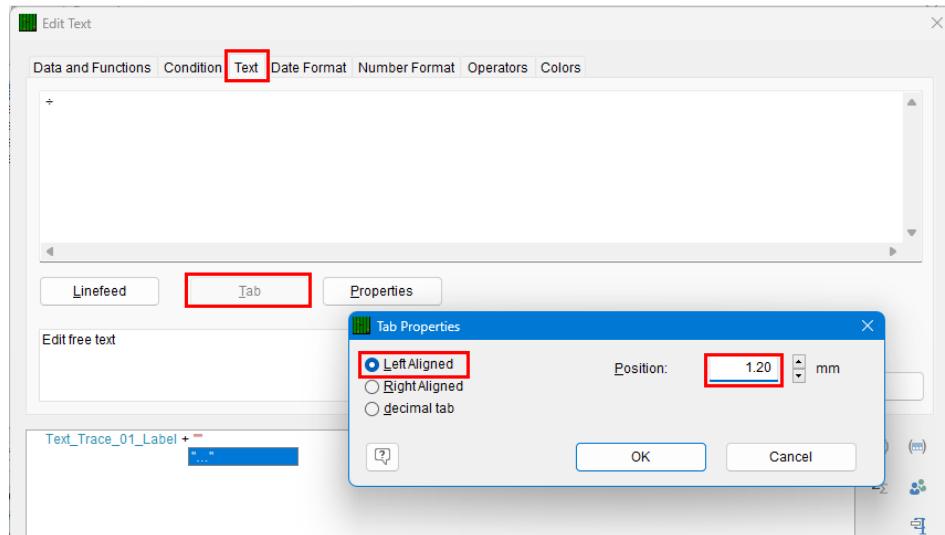
4. In the **Object List** in the upper left corner (**View – Windows – Object List** if it is not visible) double click on the “Data Box 2” object.
5. The **Paragraph Properties** window is now displayed. Highlight the line you would like to have below the Text Trace field line we are going to add and click the **Insert a Paragraph** button ().
6. In the **Edit Text** window that appears, choose “Text_Trace_01_Label” from the **Variables and Functions** tab area (it is a long way down in the list).



7. Now click the **Insert** button. The variable you chose will be automatically moved to the bottom window.

Reporting – Adding a Trace Field to Raw Data Header

- Next, click on the **Tab** tab and click the **Insert Tabulator** button. This will add a “-” (tab) to the line.
- Choose **Left Aligned** for the type of tab and set the **Position** to “1.20”. To verify this value is correct and will line up with everything else you can look at the **Tab** setting for one of the lines around where you inserted the new line.



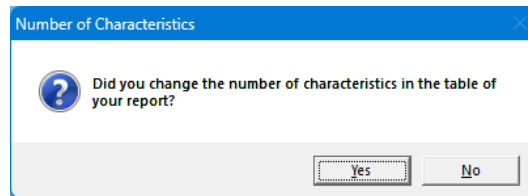
- To insert the value of text trace field 1 into the line, go back to the **Variables and Functions** tab, find the `Text_Trace_01_Value` item in the list, and click the **Insert** button.
- Now click **OK** on the **Edit Text** and **Paragraph Properties** windows.

Reporting – Adding a Trace Field to Raw Data Header

12. When you look at the “Data Box 2” area of the **Layout Preview** screen you should now see the new in the box. Make sure that all lines are still visible. You may need to stretch the window to get enough room for all lines to show.

Note: If you cannot see the “Data Box 2” because the red table is getting in the way, go to the **Layers** tab (in the same area as the **Object List**) and uncheck the “TableLayer.”

13. Click **File – Save**, then **File – Exit** to exit the Report Designer.
14. As you exit from the Report Designer you will see a question asking if you have changed the number of dimensions in your report. Choose **No**.



15. Now run your Raw Data report using the template you just changed.

