

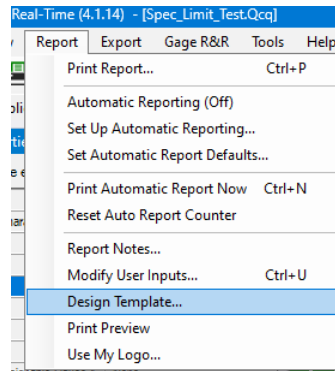
# Reporting – Adding Trace fields to Raw Data Reports

The default Raw Data reports that come with QC-CALC do not show any columns of trace field values to start. This White Paper will give step by step instructions for designing your own custom template and adding a column of Text Trace field 1 values to one of the Raw Data standard templates.

## The Report Designer

The directions shown here will replace the 10<sup>th</sup> column of dimension information in the report with a value saved in Text Trace field 1. This is a lengthy process, but relatively simple to accomplish.

1. From QC-CALC Real-Time choose the **Report – Design Template** menu.



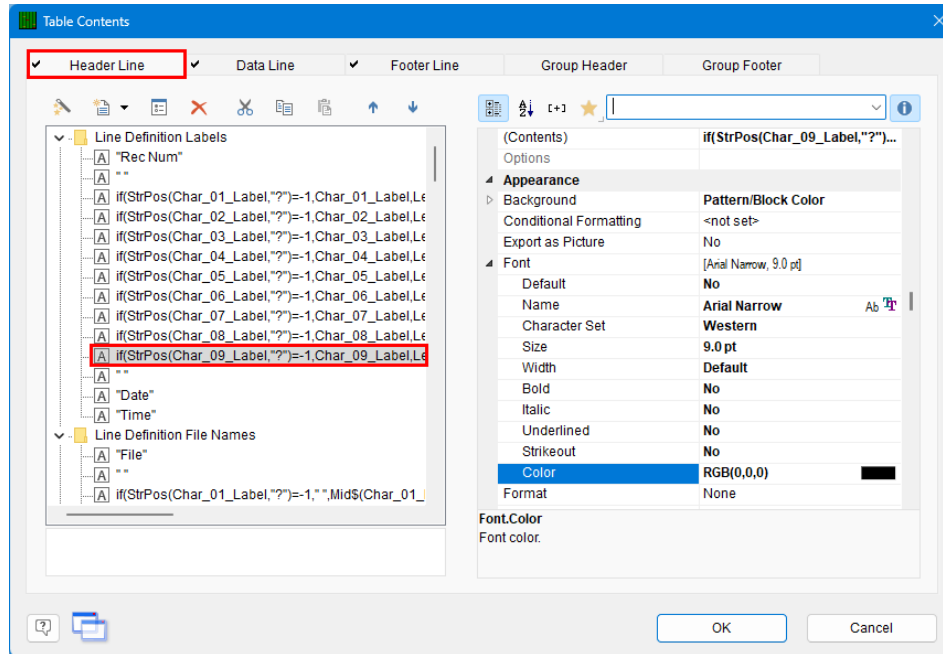
2. Choose the DataStat.raw template from the list of files that appears and click **Open**.
3. The Report Designer now appears on the screen.

A screenshot of the 'Report Designer' application window. The window title is 'Designing the Template - C:\Users\Public\ProLink\QC-CALC 4.1\Template\Default\DATASTAT\_Extra\_Column.RAW'. The interface includes a top toolbar with various editing tools, a left sidebar with a project tree, and a main workspace displaying a 'Raw Data Report' template. The report template includes a header with 'ProLink Inc.' and 'Sample200.qcq', followed by a table of dimension data. The table has columns for 'Rac Num', 'Dimension number 1' through 'Dimension number 9', 'Date', and 'Time'. The data is organized into sections: 'Nominal', 'USL', 'LSL', 'Mean', 'Max', 'Min', 'Range', 'Sigma', 'Cp', and 'Cpk'. The 'Cpk' row shows a value of 1.402, which is highlighted in red. The 'Date' column shows '08/22/02' and the 'Time' column shows '12:53:45'. The bottom status bar indicates 'Table "Table 1" - 0.407 in, 1.700 in - 10.700 in, 7.900 in = 10.293 in, 6.200 in (TableLayer)'.

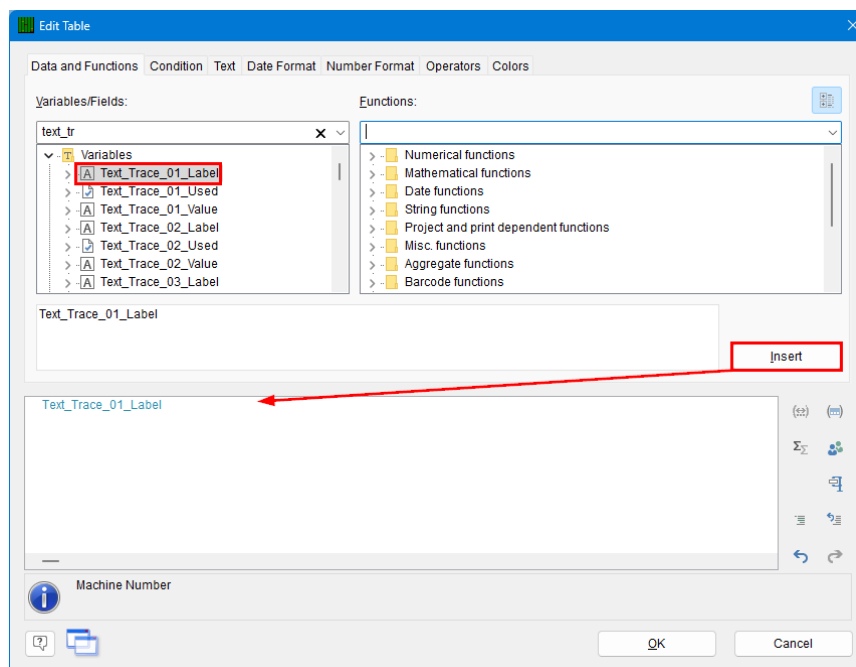
# Reporting – Adding Trace fields to Raw Data Reports

## Header Lines

1. Double click on the table and the **Table Contents** window will appear.

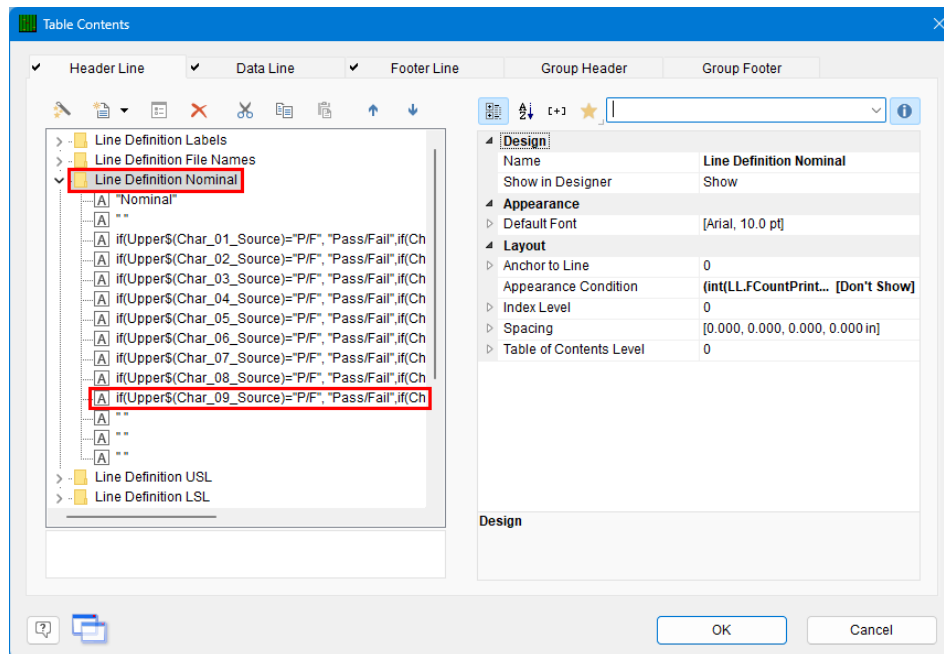


2. Choose the **Header Line** tab then double-click the “Char\_09\_Label” line in the **Line** area and the **Edit Table** window appears.
3. Highlight the “Char\_09\_Label” in the box at the bottom, then open the **Fields** list at the top of the screen.
4. Scroll down in the **Fields** list until you find the “Text\_Trace\_01\_Label” item, highlight that item, and click the **Insert** button to the right.

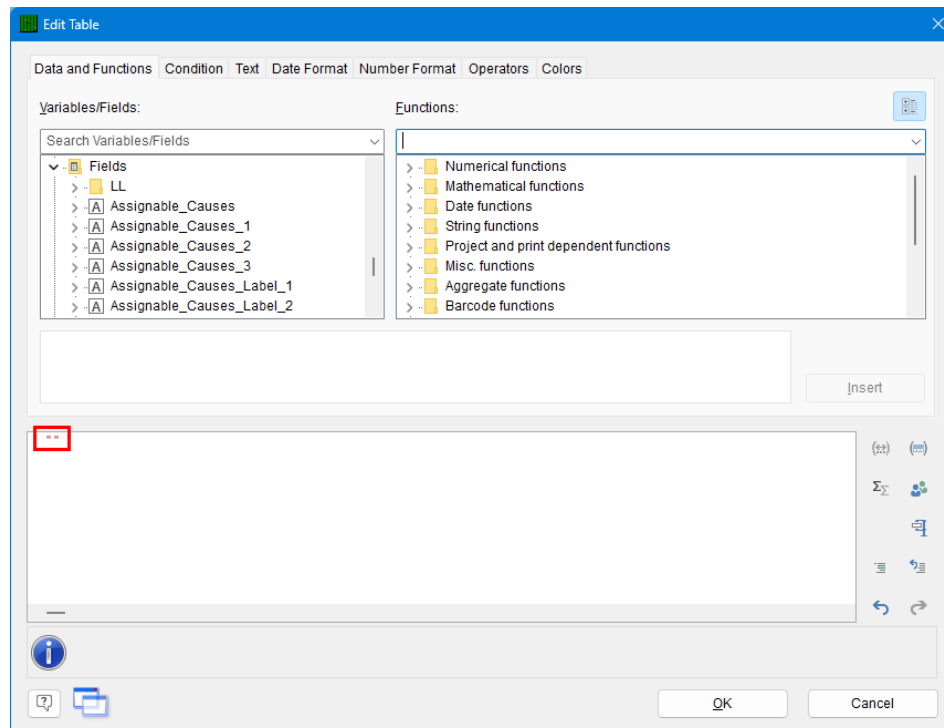


## Reporting – Adding Trace fields to Raw Data Reports

- Click the **OK** button on the **Edit Table** window.
- On the **Table Contents** window, choose the “Line Definition Nominal” item at the top of the **Header Line** tab.

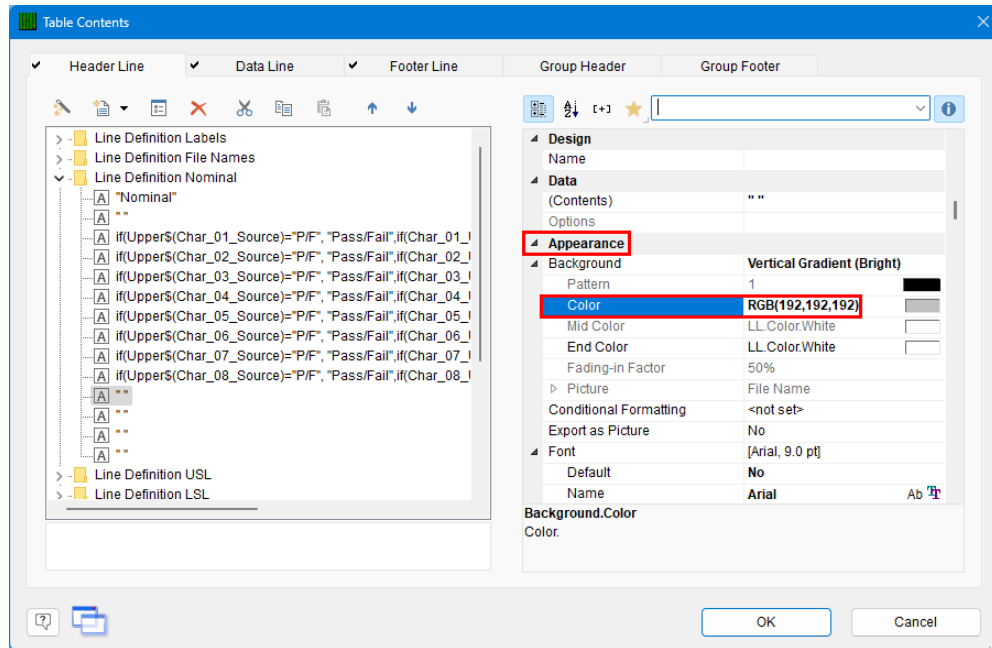


- Double-click the “if(Upper\$(Char\_09\_Source),...)” line to get to the **Edit Table** window for this line.
- In the **Edit Table** window, highlight and delete the entire “if(Upper\$(Char\_09\_Source),...)” line towards the bottom of the window, enter “ ” (quote space quote) in that area as shown below, then click **OK**.



## Reporting – Adding Trace fields to Raw Data Reports

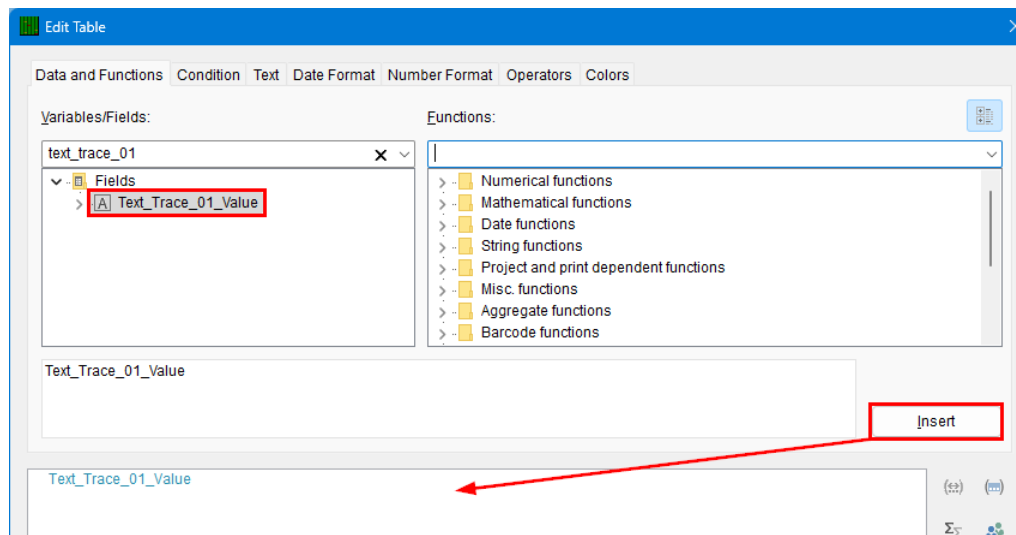
- Back on the **Table Contents** screen, click the **Expand Menu** button (▸) next to **Appearances** in the Properties pane to the right of the line definitions. Change the **Background** option to “True”, then choose “RGB(192,192,192)” for the **Color**.



- Follow steps 6 – 9 for the “Line Definition USL” and “Line Definition LSL”.

### Data Lines

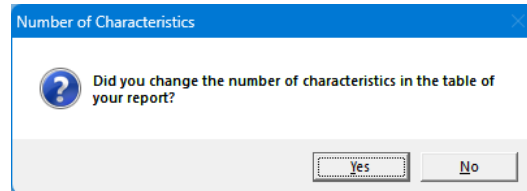
- Still in the **Table Contents** window choose the **Data Line** tab, then double-click the “if(Char\_09\_Used,...” line to get to the **Edit Table** window for this line.
- Delete everything in the box at the bottom, then scroll down in the **Fields** list at the top of the screen until you find the “Text\_Trace\_01\_Value” item.
- Highlight “Text\_Trace\_01\_Value” in the **Fields** list, click the **Insert** button, then click the **OK** button.



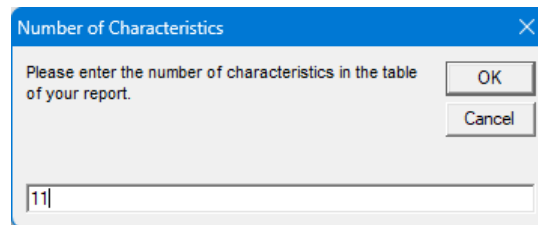
# Reporting – Adding Trace fields to Raw Data Reports

## General Steps

1. Click **OK** on the **Table Contents** screen and save your changes (**File – Save**).
2. Exit from the Report Designer and you will see a question asking if you changed the number of dimensions in your report. Choose **Yes** on this message.



3. The next window that appears will be asking for the total number of dimensions now represented in this report. Answer this question with “8” in order for your report to run correctly in the future.



4. When you print your raw data report now, you'll have an extra column for text trace field 1.

	Machine Number	Date	Time
	3520	03/27/23	05:38:14
	3520	03/27/23	05:50:17
	3520	03/27/23	05:50:17
	3520	03/27/23	05:50:17
	3520	03/27/23	05:50:17
	3520	03/27/23	05:50:17