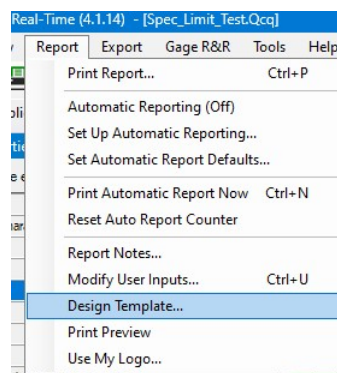


Reporting – Adding Extra Information to Raw Data Header

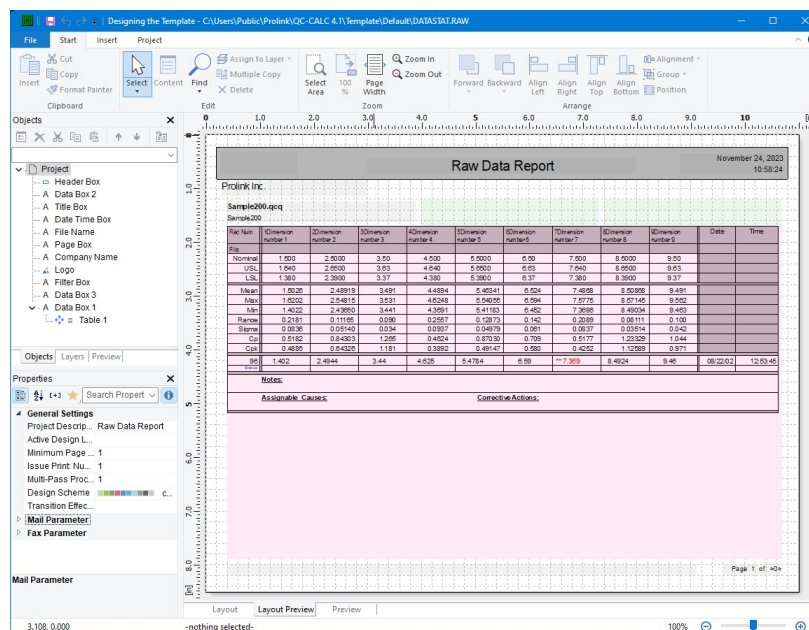
The default Raw Data reports that come with QC-CALC does not show the Dimension's Extra Information in the heading area of the report. This White Paper will give step by step instructions for designing your own custom template and adding the Extra Information for Dimension 1 and displaying it in the header area of one of the standard Raw Data templates. These concepts can additionally be applied to any of your other dimensions in the future, as well as in any of the other default templates.

The Report Designer

The directions shown here will add Extra Dimension for Dimension 1 in your .QCC file to the header area of the report.

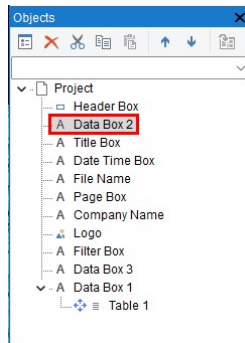


1. From QC-CALC Real-Time choose the **Report > Design Template** menu.
2. Right-click the DataStat.raw template from the list of files and make a copy of it.
3. Choose the copy and click **Open**.
4. The Report Designer now appears on the screen.

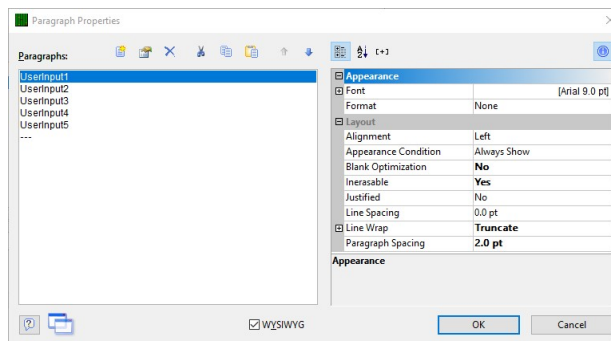


Reporting – Adding Extra Information to Raw Data Header

5. In the **Object List** in the upper left corner (**Objects > Object List** if not immediately visible) double click on the “Data Box 2” object.

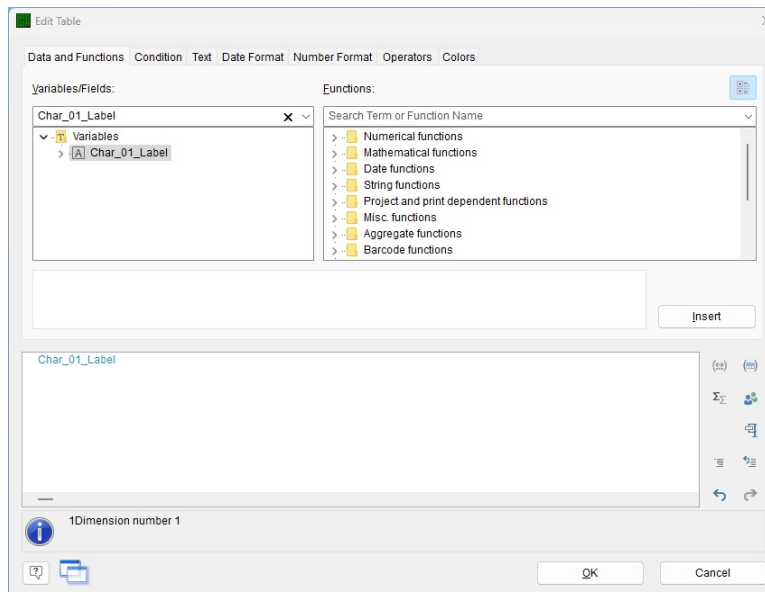


6. The **Paragraph Properties** window is now displayed. Highlight the line you would like to have below the Text Factor line we are going to add and click the **Insert a Paragraph** button



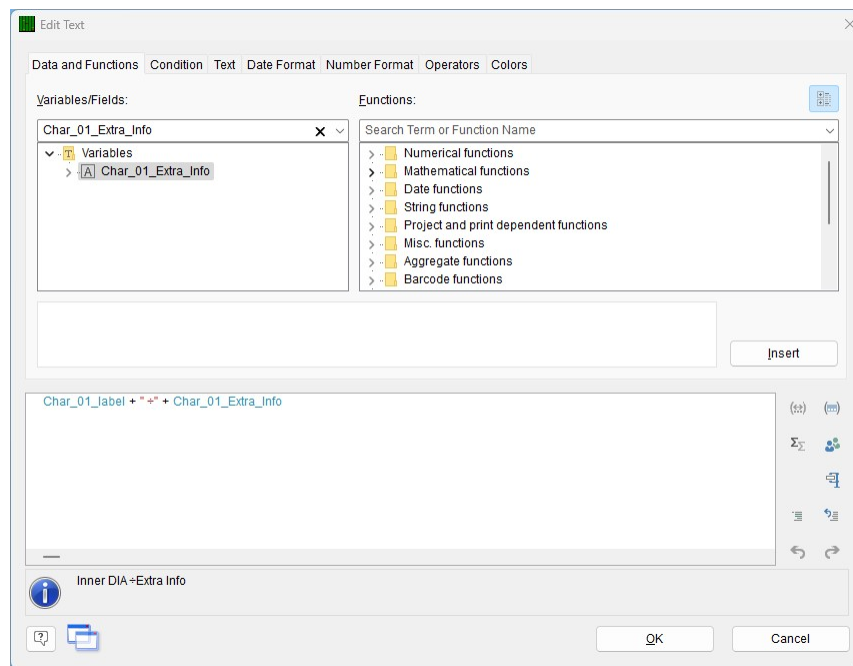
7. In the **Edit Text** window that appears, choose “Char_01_Label” beneath the Variables menu (under the **Variables and Functions** tab area).

8. Now click the **Insert** button. The variable you chose will be automatically moved to the bottom window.

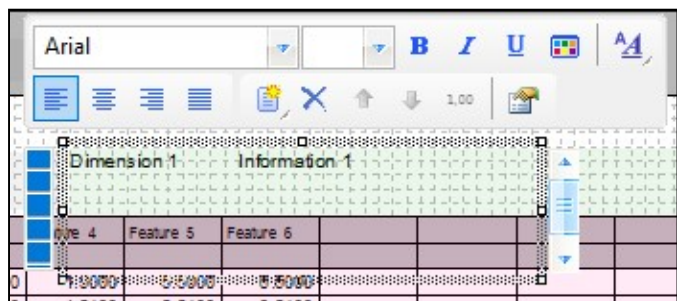


Reporting – Adding Extra Information to Raw Data Header

9. Next, click on the **Text** tab and click the **Tab** button. A “÷” will appear in the text box, and a new window will appear
10. Choose **Left aligned** for the type of tab and set the **Position** to 1.2 and hit **OK**.
 - a. **Note:** To verify this value is correct and will line up with everything else you can look at the **Tab** setting for one of the lines around where you inserted the new line.
11. Press **Insert** to add this to the bottom-most text box.
12. To insert the actual Extra Information value into the line, go back to the **Variables and Functions** tab, find the “Char_01_Extra_Info” item in the list, and click the **Insert** button



13. Now click **OK** on the **Edit Text** window, and then again on the **Paragraph Properties** window, and once more on the **Object List** window.
14. When you look at the “Data Box 2” object on the **Layout Preview** screen, you should now see the new values in the box. Make sure that all lines are visible. You may need to stretch the window to get enough room for all lines to show.
 - a. **Note:** If you cannot see the “Data Box 2” object because the red table is getting in the way, go to the **Layers** tab (in the same box as the **Object List**) and uncheck the “TableLayer.”



Reporting – Adding Extra Information to Raw Data Header

15. Click **File > Save**, then **File > Exit** to get out of the Report Designer.
16. As you Exit from the Report Designer you will see a question asking if you have changed the number of dimensions in your report. Choose **No**.
17. Now run your Raw Data report using the template you just changed, and you should see the new information!

Raw Data Report

Dimension 1 Information 1

on 1										Date
000										
0100										
0900										
064										