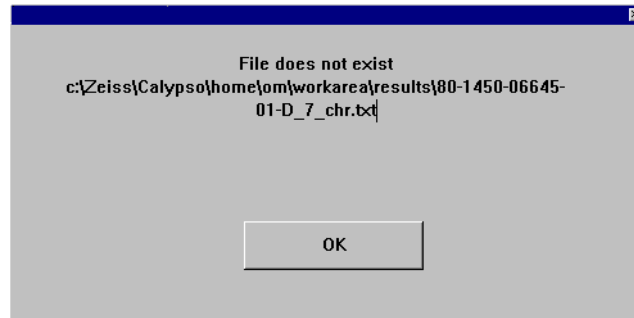


Data Collection – Zeiss Calypso Errors

“File Does Not Exist” Error - Since the release of Calypso 3.8.xx or higher, we have witnessed occasional error messages at the end of a part run. When Calypso completes the part inspection it creates the table files that QC-CALC Real-Time reads. QC-CALC then deletes the table files which randomly upsets Calypso. Below you see a screenshot of Calypso’s typical error message. Everything appears to run fine and QC-CALC obtains the data but still an error message appears.



Special Calypso Batch Files

After contacting Zeiss Germany we have determined there is a “race condition” between Calypso writing the files and QC-CALC reading and renaming them. To solve this problem we found a little known Calypso feature that we will use called **RUNEND.BAT**.

In order to extend Calypso's power without changing the source code, a special “trigger” file can be added to the system. You simply add a file by the name of **RUNEND.BAT** in the default path of inspections and, if present, Calypso executes it. No other setting is necessary to make this work. Prolink provides this file for you in the c:\Prolink\QC-CALC 3.0\Setup directory, but you will need to copy this file to the following location:

c:\zeiss\calypso\home\om\workarea\inspections\runend.bat (for all inspections)

This batch file contains a simple XCOPY command to make a copy of the table files in another location so Calypso doesn't complain and QC-CALC can still read the data automatically. The one command line we use is:

```
xcopy C:\Zeiss\Calypso\home\om\workarea\results\*.txt c:\spcdata\ /c /m /r /y
```

We use the **/M** switch to reset the archive bit so we only copy the new files. This is important because we do not want to read the same files twice!

You can place this RUNEND.BAT file in specific part program folders as well. Should you need to add other batch commands to this file please do not remove the one line we require but instead add other commands in the same file.

To use RunEnd.bat do the following:

1. Copy the batch file from the **C:\Prolink\QC-CALC 3.0\Setup** folder to:
C:\Zeiss\Calypso\home\om\workarea\inspections\.
2. Create **C:\SPCData** as a folder.
3. Adjust QC-CALC's **Source Path and Name** to **C:\SPCdata*_chr.txt** by selecting **Tools – Options – Data Collection – Data Source Information** and changing the **File Path and Name** value.

Data Collection – Zeiss Calypso Errors

The following listing is a copy of the RUNEND.BAT shipped with QC-CALC (in case you need to create your own file).

```
Rem 1/27/2006
Rem
Rem This batch file was written by Prolink to support the interface between
Rem our QC-CALC SPC program and Zeiss Calypso table files. When we read
Rem the Calypso files in their default location, occasionally Calypso reports
Rem an error indicating the files are not available. This error message delays
Rem further inspection until the inspector clicks OK and it is very annoying.
Rem
Rem When Calypso completes a part inspection, it executes a special DOS
Rem batch file by the name of RUNEND.BAT if it exists in:
Rem
Rem      c:\zeiss\calypso\home\om\inspections\
Rem
Rem Prolink added this file to this folder for Calypso to use. The XCOPY
Rem command copies all new files found to another location where QC-CALC
Rem safely reads them. This method has eliminated the Calypso error messages
Rem because it does not interfere with Calypso's operation.
Rem
Rem If you are reading this note and you also need to use the RUNEND.BAT
Rem option, please add your comments and any executable DOS commands
Rem but please do not remove the XCOPY line as seen below. We have included
Rem all XCOPY switch values for reference.
Rem
Rem
Rem Bruce Brigham      Prolink 860-659-5928      www.prolinksoftware.com
Rem
Rem XCOPY Switches:
Rem
Rem /A=archive bit set, don't reset /M=Archive only and reset bits
Rem /C=Continue even if errors      /R=overwrite R/O files
Rem /E=Even empty directories      /S=Subdirs
Rem /F=display full name            /T=Directories only
Rem /I=assume Directory             /V=Verify
Rem /K=copy attributes too          /Y=Overwrite existing

xcopy C:\Zeiss\Calypso\home\om\workarea\results\*.txt c:\spcdata\ /c /m /r /y

Rem The /M switch is used to reset the archive bit so we only copy the new files
Rem This is important because we do not want to read the same files twice!
```